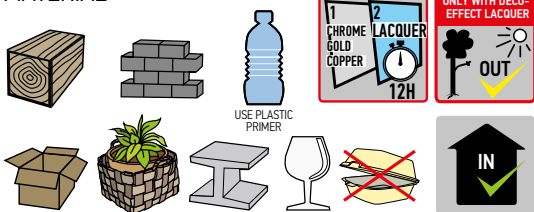




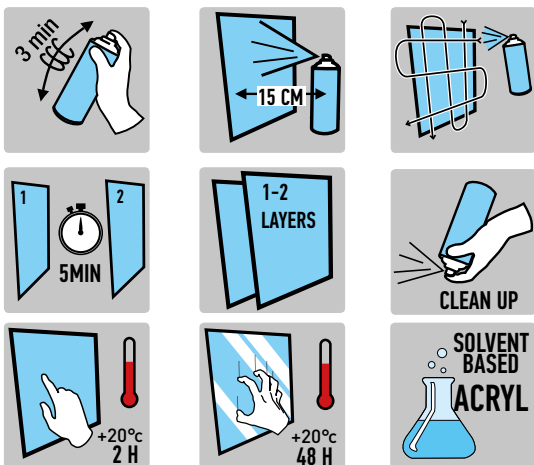
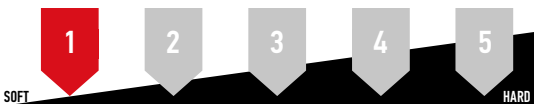
DECORATIVE: GOLD, COPPER AND CHROME SPRAYS



MATERIAL



HARDNESS



CAR-REP EFFECT SPRAY is a high-gloss decorative paint for indoor use. Leaves shiny decorative surface, dries fast, and covers well. For metal, wood, glass and most artificial surfaces. Limited wear and weather resistance. We recommend Clear coat effect spray on dry surface for better resistance. Coverage: Depending on consistence and colour of the ground: 400 ml are sufficient for around 1.2 m² Drying time (at 20°C, 50% relative air humidity): Dust-dry: after approx. 30 minutes Dry to touch: after approx. 2hours, Completely dry : after 48 hours

BINDER:

Acryl, Solvent based

DEGREE OF GLOSS (DIN 67530 60 °):

gloss 80-100 gloss units

STORAGE STABILITY:

60 months

EU VOC-CONTENT:

VOC 502g/L

RECOAT:

always, 5 minutes in between layers (in +20 °C)

SIZE:

400ml

SALES QTY:

400ml 6 pcs

- **CAR-REP GOLD EFFECT 400ML**
ART NR cr01058 BAR CODE 6412490024307
- **CAR-REP COPPER EFFECT 400ML**
ART NR cr01059 BAR CODE 6412490024314
- **CAR-REP CHROME EFFECT 400ML**
ART NR CR01063 BAR CODE 6412490016371

Information valid at 20°C, relative air humidity 20% - 70%